

www.helichina.com

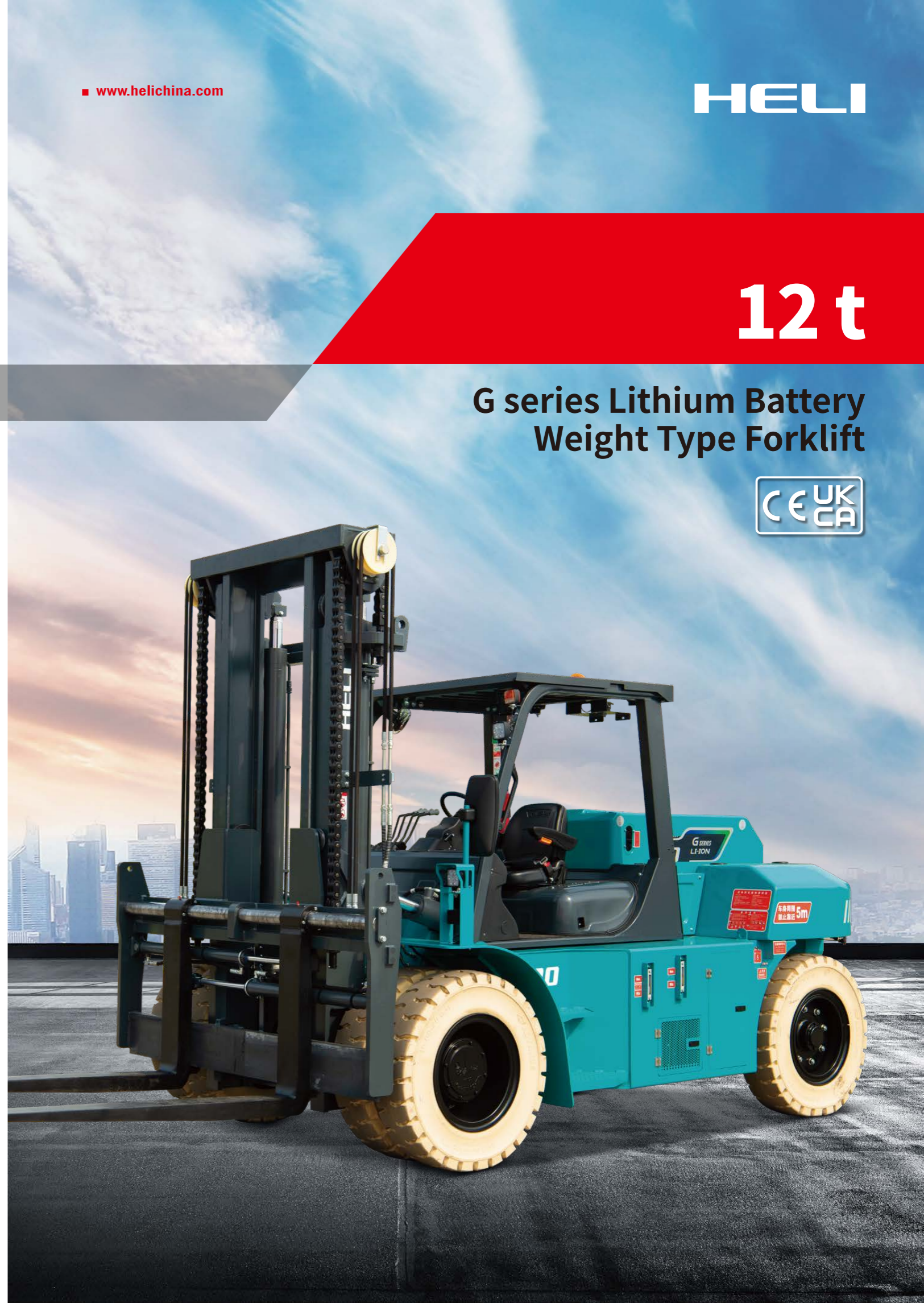
HELI

12 t

G series Lithium Battery Weight Type Forklift



HELI



ANHUI HELI CO., LTD.

Add / No.668, FangXing Road, Hefei, China

Fax / +86-551-63639966

Tel / +86-551-63639068(America); 63639258(Europe); 63639358(Asia); 63662105(Africa & Middle East); 63639530(Overseas Marketing)



LinkedIn



YouTube



Facebook

Design&Print:Fokell Printing 20250520

* Our products are subject to improvements and changes without notice.

*With more than 60 years
of Heli technical precipitation*

Drawing on over 60 years of
technological accumulation
HELI integrates the strengths of many
to create quality products.

The Heli CPD120-GB7Li-06 12-ton forklift can be widely used in enterprises, stations, ports, docks, and ship cabins, etc. It is suitable for handling overweight and oversized goods, as well as for moving and stacking empty containers of certain models.



A

PRODUCT FEATURES

MATURE PLATFORM

ENSURE THE DURABILITY AND RELIABILITY OF THE PRODUCTS.

The heavy-duty lithium battery models are developed and designed based on mature platforms, with over 68% of the vehicle parts being universal and over 80% of the standardization coefficient. Heli's self-made standard box-integrated battery box enables one type of battery to be applied to different tonnage models, effectively reducing spare parts and management costs.

With 60 years of craftsmanship, HELI never stops.

Mastering component development, details determine quality.

Standardized platform design, with a high degree of universality.

STRONG PERFORMANCE



PERMANENT MAGNET SYNCHRONOUS MOTOR

The permanent magnet synchronous motor is adopted, which features high working efficiency, fast response speed, low failure rate and good energy-saving effect. The motor and electronic control are cooled by water to ensure their superior working condition.



HYDRAULIC SYSTEM

The hydraulic system has excellent performance, good maneuverability, high precision and the whole vehicle is stable and reliable.



HIGH-SPEED DRIVE AXLE

The axle housing has high strength, improved transportation efficiency and reliable performance. It adopts a heavy-duty forklift-specific high-speed drive axle, featuring wet braking, dust-proof and water-proof design, and maintenance-free. It has excellent braking performance and meets the requirements of long-term and heavy-duty operation.



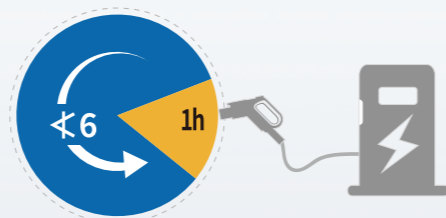
UNWORRYING BATTERY LIFE

COMPATIBLE WITH NEW ENERGY VEHICLE CHARGING PILES



THE BATTERY IS OPTIONAL

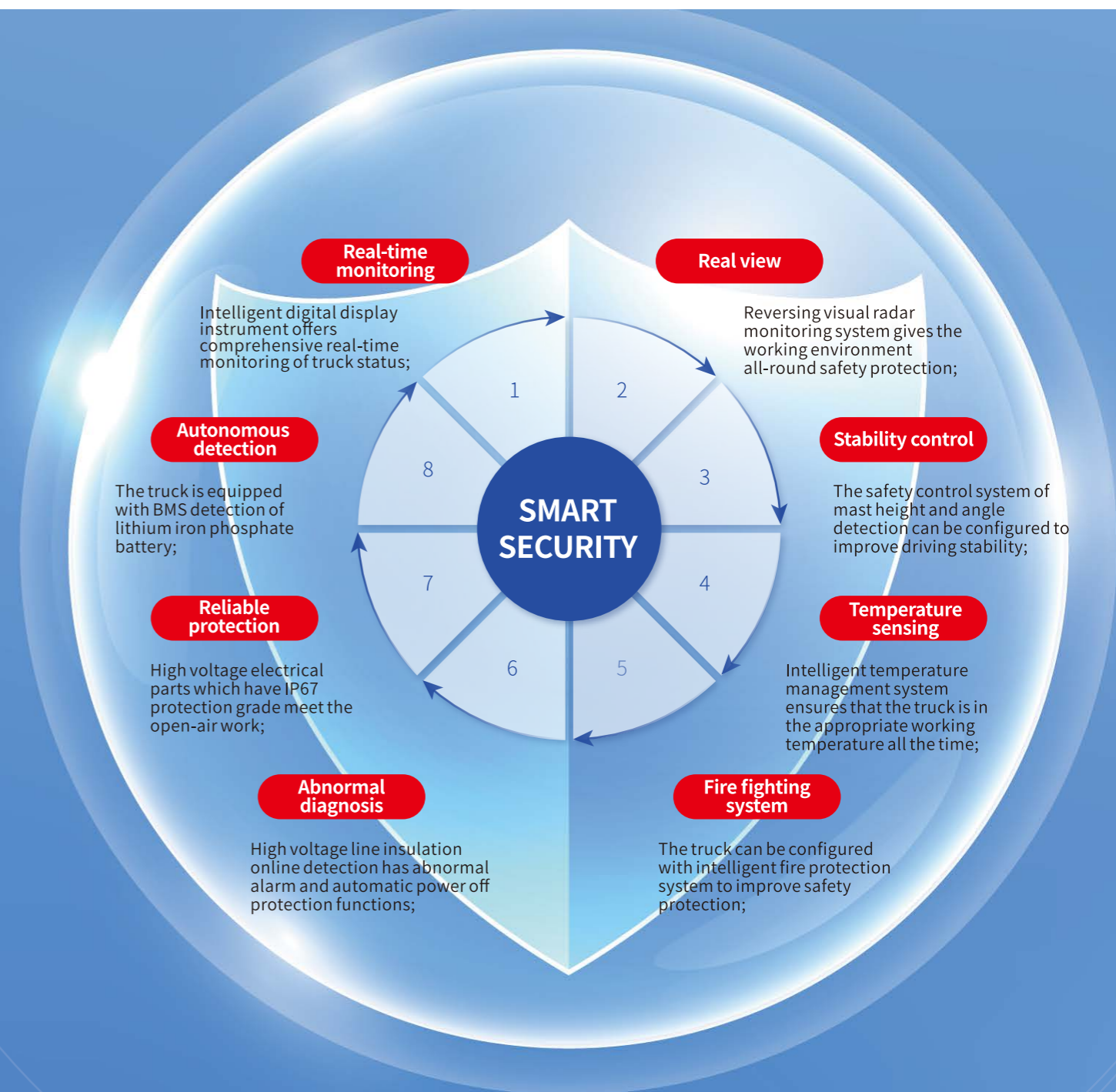
According to the customer's usage requirements, it can be used for no less than 6 hours under normal working conditions.



INTELLIGENT SECURITY

OFFER EIGHT LAYERS OF SAFETY PROTECTION

The entire vehicle's high-voltage lines are equipped with an online insulation monitoring function to monitor the vehicle's status in real time. The high-voltage electrical components have a high protection level (IP67) and are equipped with an intelligent temperature management system, which can meet the all-weather outdoor working requirements.





CONVENIENT MAINTENANCE AND REPAIR

THE COMPREHENSIVE USAGE COST IS ONLY 23% OF THAT OF INTERNAL COMBUSTION FORKLIFTS.

The adoption of a top-mounted return oil filter makes filter element replacement more convenient. The use of a standard battery box, with a sealed enclosure and plug-and-pull connectors, ensures greater safety during production, operation and maintenance. The wet braking system requires no maintenance. This effectively reduces spare parts and management costs.



COMFORTABLE AND ENVIRONMENTALLY FRIENDLY

PROVIDE CUSTOMERS WITH A RELAXING DRIVING EXPERIENCE

Vibration reduction, Full suspension overhead guard reduces the whole vehicle vibration.

Noise reduction, The perfect combination of fully enclosed instrument panel and covering parts reduces the noise transmission of the power system.

Good visibility: Wide-visibility mast provides a good operating view.

Standard rear working light: Convenient for night work.

Rich instrument display: Friendly human-machine interface allows timely acquisition of the whole vehicle status, ensuring safe driving and stable operation.

Light and effortless hydraulic system operation: Reduces operation fatigue and provides a more comfortable operation experience.

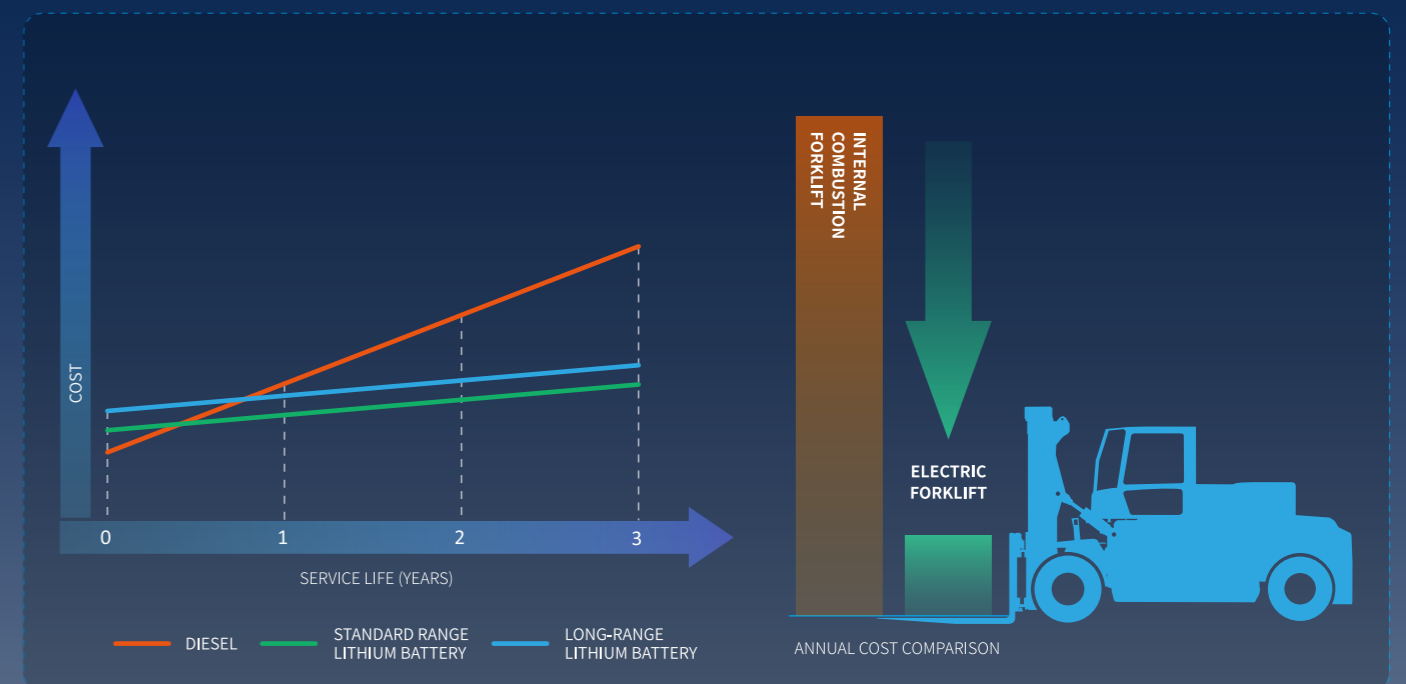


LOW NOISE AND LOW POLLUTION

The vehicle operates with low noise, reducing noise pollution; it works purely on electricity and does not use fossil energy, achieving "zero emissions".

ENERGY RECOVERY TECHNOLOGY

Equipped with kinetic energy regeneration technology, it recovers energy and supplements it to the battery, further enhancing system efficiency and overall vehicle range. The annual comprehensive usage cost of an electric vehicle is only 23% of that of an internal combustion vehicle.



*Due to differences in working conditions and fluctuations in electricity and oil prices, the data may vary. The above is for reference only

B TECHNICAL PARAMETERS

Main technical parameters			
Characteristics			
1.1	Manufacturer		HELI
1.2	Model		CPD120-GB7Li-06
1.3	Rated load	kg	12000
1.4	Load center distance	mm	600
1.5	Power mode		Electric
1.6	Driving mode		Seat
Size			
2.1	Lifting height (standard)	mm	3000
2.2	Mast tilt (forward tilt/backward tilt)	°	6 \ 12
2.3	Full length (with forks)	mm	5820
2.4	Full length (without forks)	mm	4450
	Full width	mm	2350
3.1	Mast full height (forks on the ground, mast vertical)	mm	3165
3.2	Maximum height at work (with shelving)	mm	4670
3.3	Top guard height	mm	2592
3.4	Seat SIP point height (to ground)	mm	1090
3.5	Wheelbase	mm	3000
3.6	Front track	mm	1760
3.7	Rear track	mm	1850
3.8	Ground clearance (full load, mast)	mm	270
3.9	Outer turning radius	mm	4300
3.10	Fork size: thick x wide x long	mm	85/175/1370
3.11	Outer fork spacing, maximum/minimum	mm	2250/440
Performance			
4.1	Driving speed (full load/empty load)	km/h	24/25
4.2	Lift speed (full load/empty load)	mm/s	390/420
4.3	Descent speed (full load/empty load)	mm/s	420/350
4.4	Maximum traction (full load/no load)	kN	73/63
4.5	Maximum climbing capacity (full load/empty load)	%	20/20
Battery			
5.1	Battery voltage/capacity	V/Ah	608.58/173
5.2	Battery weight (minimum/maximum)	kg	608.58/173
Motors and controllers			
5.4	Drive motor power	kW	90
5.5	Lift motor power	kW	90
Tyre			
6.1	Tire size, front		10.00-20-18PR
6.2	Tire size, back		10.00-20-18PR
Others			
7.1	Service brake/parking brake		Wet brake/electronic
7.2	System working pressure	Mpa	19

Standard Mast					
Gantry type	Lifting height (mm)	Mast Lowered Height (mm)	Rated Capacity (Standard Load Center)(kg)	Weight of mast	Inclination (forward/backward)
M250	2500	2915	12000	3124	6 / 12
M266	2660	2995		3165	
M300	3000	3165		3251	
M330	3300	3315		3330	
M350	3500	3415		3378	
M375	3750	3540		3445	
M400	4000	3665		3509	
M450	4500	3915		3636	
M500	5000	4215	3792	6 / 6	
M550	5500	4465	11000	3917	3 / 6
M600	6000	4765	10000	4071	
M650	6500	5015	9000	4201	
M700	7000	5265	8000	4331	

Double Stage Full Free Mast					
Gantry type	Lifting height (mm)	Free lift height(mm)	Mast Lowered Height (mm)	Rated Capacity (Standard Load Center)(kg)	Inclination (forward/backward)
ZM300	3000	1500	3165	10700	6 / 12
ZM350	3500	1750	3415		
ZM400	4000	2000	3915		
ZM450	4500	2250	4215		
ZM500	5000	2500	4215		
ZM550	5500	2750	4465	9700	6 / 6
ZM600	6000	3000	4765	8700	3 / 6
ZM650	6500	3250	5015	7700	

Triple Stage Full Free Mast					
Gantry type	Lifting height (mm)	Free lift height(mm)	Mast Lowered Height (mm)	Rated Capacity (Standard Load Center)(kg)	Inclination (forward/backward)
ZSM400	4000	1340	2970	10500	6 / 12
ZSM450	4500	1500	3140		
ZSM480	4800	1660	3220		
ZSM500	5000	1660	3220		
ZSM550	5500	1840	3491	9500	3 / 6
ZSM600	6000	2000	3640	8500	
ZSM650	6500	2160	3810	7500	

